

# Kidde Fire Systems

## HPCO2 Component Description

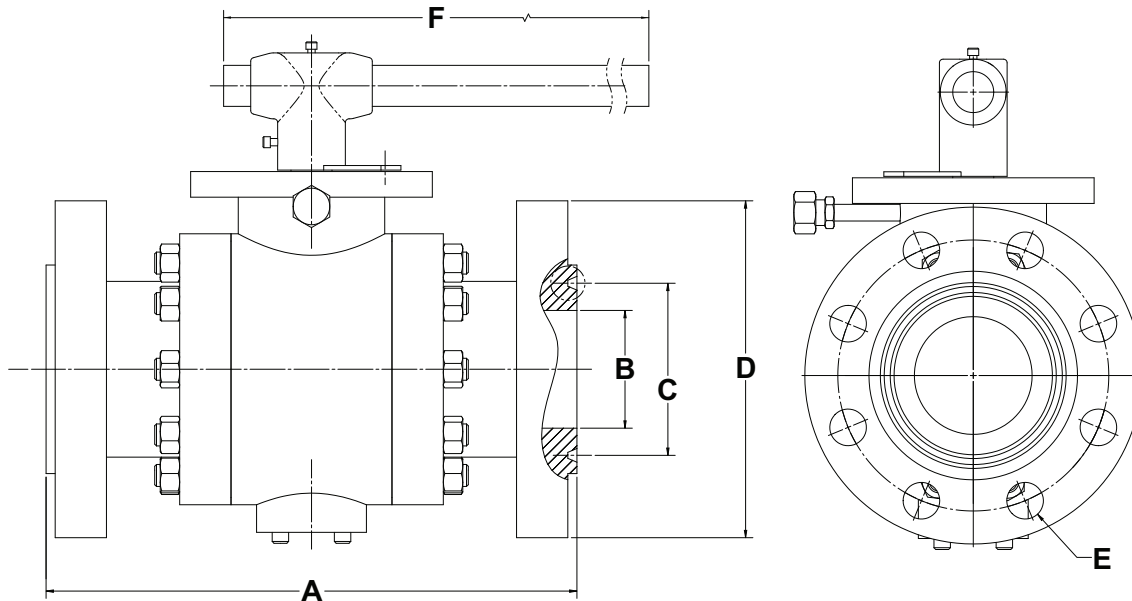
3" and 4" Lock-Out Valve, Stainless Steel  
(without Limit Switch)



Effective: February 2022  
K-81-1401 Rev AB

### FEATURES

- For Use with UL Listed, ULC Listed and FM Approved Systems
- See Kidde® Manual 220610 for USCG Approval



### Ordering Information

Valve Size	Part Number	Approximate Dimensions (inches)						Approx. WT (lb)	Valve Style
		A	B	C	D	E	F		
3"	81-934808-000	15.120	3.030	4.875	9.500	1.000	27.600	168	Full Port
4"	81-934809-000	18.120	4.020	5.875	11.500	1.250	35.400	331	Full Port

### MATERIALS

- **Body:** Stainless Steel, 316
- **Cap, Body:** Stainless Steel, 316
- **Ball:** Stainless Steel, 316
- **Stem:** Stainless Steel, 51

Working Pressure:

- 2250-psig

End Connection:

- Ring Type Joint (RTJ) Flange, CL900

### EXPORT INFORMATION (USA)

Jurisdiction: EAR  
Classification: EAR99

This document contains technical data subject to the EAR.

All trademarks are the property of their respective owners.

©2022 Carrier

This literature is provided for informational purposes only. KIDDE-FENWAL, INC. believes this data to be accurate, but it is published and presented without any guarantee or warranty whatsoever. KIDDE-FENWAL, INC. assumes no responsibility for the product's suitability for a particular application. The fire suppression system design, installation, maintenance, service and troubleshooting must be performed by trained, authorized Kidde Fire Systems distributors for the product to work correctly. If you need more information on this product, or if you have a particular problem or question, contact KIDDE-FENWAL, INC., Ashland, MA 01721 USA. Telephone: (508) 881-2000.

Kidde Fire Systems  
400 Main Street  
Ashland, MA 01721  
Ph: 508.881.2000  
Fax: 508.881.8920  
[kiddefiresystems.com](http://kiddefiresystems.com)